

CONTRACT FURNITURE  
DESIGN  
MANUFACTURE  
PROJECT MANAGEMENT



# ENVEN

INTERIOR FIT-OUT PROFESSIONALS



# 01

## CONTENT

### ABOUT COMPANY

ABOUT US	3
MANAGING INDIVIDUAL PROJECTS	5
WE CAN MAKE ...	6
WHY US?	7
TECHNOLOGY	8
COMPETENCE	9
YOU CAN BE OUR PARTNER / CUSTPMER ...	10
OFFISE	11
RESIDENTIAL	28
HORECA	47
PUBLIC	59
SUPPLIERS	62
PARTNERS	63
CUSTOMERS	64
CONTACTS	65

### PROJECTS

### CONTACTS

# 01

## ABOUT US

**ENVEN IS INTERIOR FIT-OUT AND FURNISHING COMPANY**, founded in 2014 by Lithuanian designers, architects and professional manufacturers.

Whether creating a fashion store, an office, a bar or a restaurant, **ENVEN** aims to provide high-quality solutions to client's design needs, innovating new production techniques and construction methods. We offer high quality, complex project management solutions in **construction and furniture manufacturing**.

**We work in private, commercial and retail market**, mainly for fashion brands, retailers and hospitality units (restaurants, bars, hotels) all across Europe.

# 01

## ABOUT US



In the former years we have completed projects in the following countries: **Netherlands, France, Denmark, Norway, Sweden, United Kingdom, Germany, Russia, Poland, Baltic states.**



# 01

## ABOUT US

# MANAGING OF INDIVIDUAL PROJECTS

- Communication with architects, customers
- Coordination of the project
- Preparation of project estimate
- Development of drafts/projections
- Visualisation of the products
- Electrical installation
- Quality control
- Delivery of production
- Production assembling into place

# 01

## ABOUT US

### WE CAN OFFER PRODUCTS MADE OF

- Natural stone
- ABS
- High pressure laminate
- Melamine faced chipboard
- Metal
- Solid wood
- Textiles
- Natural leather
- Glass
- Furniture linoleum
- Painted MDF
- Veneer

# 01

## ABOUT US

### WHY US?

**FLEXIBILITY** We own a 2000 sqm furniture factory in Lithuania. Furthermore, we collaborate with a number of production companies, therefore we can implement even the most complex projects. We offer a wide range of services from decoration works to sophisticated and unique furniture.

**QUALITY** We supervise all processes throughout designing, production and assembling.

**INTERMEDIATION** We intermediate between businesses in export market as well. We ensure a constant, high quality individual standard production supply for the foreign or local clients.

# 01

## ABOUT US

### TECHNOLOGY

**ENVEN** offers an exceptional contract process “Direct Design Build”. By using this method, the object can be prepared for customers operation by saving at least 20% of customer’s financial and time resources.

The main technologies are the simultaneous implementation of all major interior design works: design, finishing works, production of non-standard furniture, supplies of other furniture and household appliances, plumbing and electrical works.

**All complex interior works in on Contract with a fixed price.** This process, which is justified by the systemicity and functionality, has already been appreciated by many customer from different regions.

#### PROCESS

#### RESULT

##### DIRECT

project  
estimate  
guaranties

##### DESIGN

architecture  
design  
project

delivery  
coordination  
manufacture

##### BUILD

**100%**  
Realized object

**20%**  
less resources  
faster flow

# 01

## ABOUT US

### COMPETENCE

The key of successful work is clear project management. Both product and process management qualities are main guarantee of successful result.

1

CONTRACT  
AND  
RESPONSIBLE  
PERSON

10<sup>+</sup>

COMPETENCES  
OF  
NON-STANDARD  
FURNISING

20<sup>%</sup>

SAVINGS OF  
FINANCIAL AND  
TIME  
RESOURCES

50<sup>+</sup>

SUCCESSFULLY  
REALISED  
PROJECTS



# 01

## ABOUT US

**YOU CAN BE OUR PARTNER  
IF YOU ARE**

**ARCHITECT / DESIGNER**

WE CAN HELP YOU TO IMPLEMENT YOUR PROJECT FOR DIRECT CLIENT.

**REAL ESTATE DEVELOPER**

WE CAN BE YOUR PARTNER OF FURNISHING

**YOU CAN BE OUR CLIENT  
IF YOU ARE**

**PRIVATE CUSTOMER**

WE CAN REALIZE YOUR DREAM HOUSE OR APARTMENT

**ANY BUSINESS DEVELOPER**

WE CAN REALIZE AND FURNISH YOUR NEW OFFICE, SHOP, RESTAURANT,  
CAFÉ OR ANY OTHER BUSINESS AREA

# 02

## PROJECTS

# OFFICES

DE BANK

CORNER OFFICE

META

ALLEGRO GROUP OFFICE

# DE BANK

PM:  
DATE:

Pavel Madekša  
2015

OBJECT: Bank interior,  
Rotterdam, the Netherlands  
AREA: 1400 m<sup>2</sup>  
PROJECT: KAAAN Architekten





# DE BANK

PM:  
DATE:

Pavel Madekša  
2015

OBJECT:

Bank interior,  
Rotterdam, the Netherlands

AREA:

1400 m<sup>2</sup>

PROJECT:

KAAN Architekten



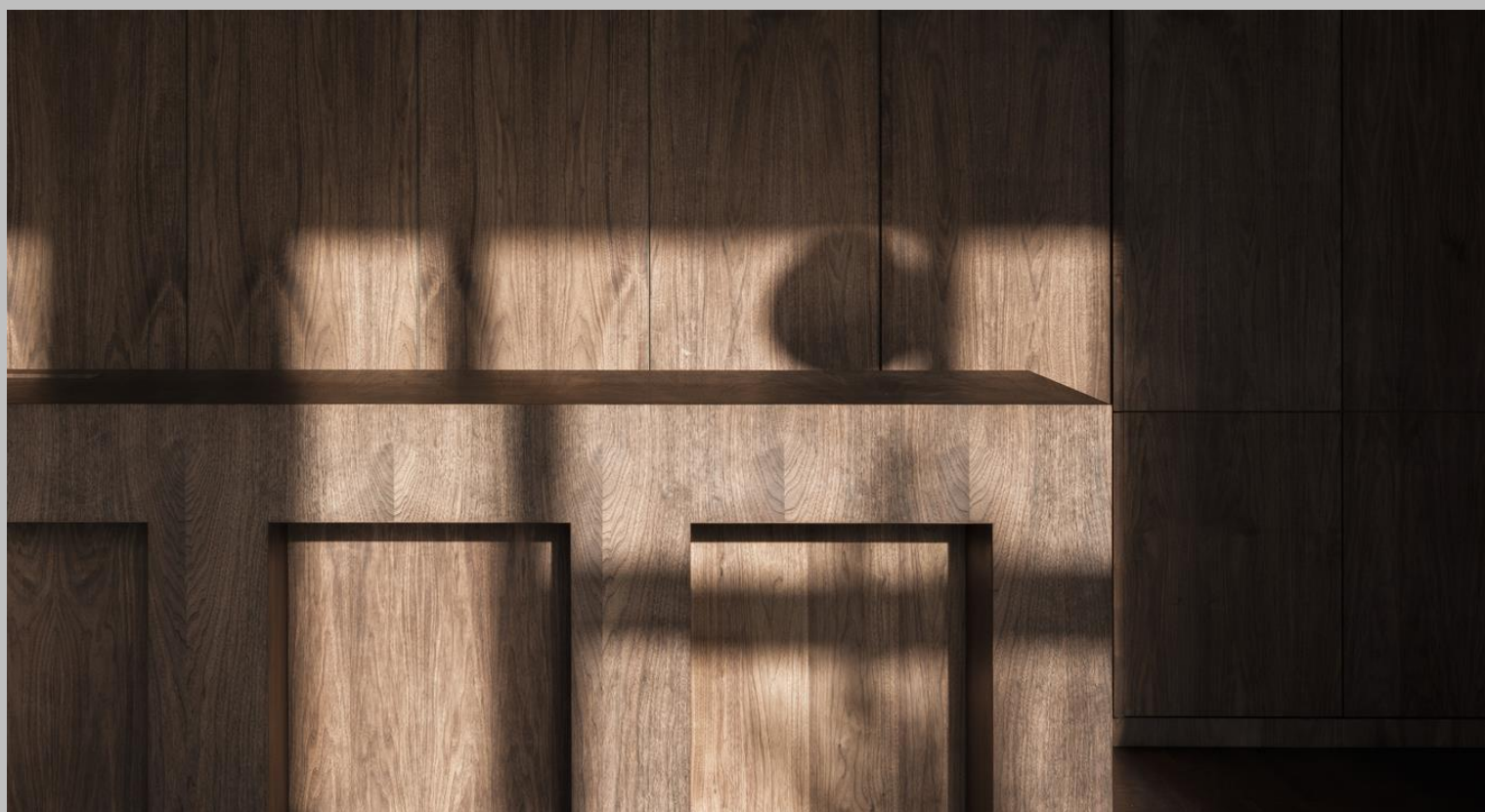


# DE BANK

PM:  
DATE:

Pavel Madekša  
2015

OBJECT: Bank interior,  
Rotterdam, the Netherlands  
AREA: 1400 m<sup>2</sup>  
PROJECT: KAAAN Architekten





# DE BANK

PM:  
DATE:

Pavel Madekša  
2015

OBJECT: Bank interior,  
Rotterdam, the Netherlands

AREA: 1400 m<sup>2</sup>

PROJECT: KAAAN Architekten





## CORNER OFFICE

PM:  
DATE:Pavel Madekša  
2016

OBJECT:

Retail Agency office interior,  
Stockholm, Sweden

AREA:

115 m<sup>2</sup>

PROJECT:

ENVEN





## CORNER OFFICE

PM:  
DATE:Pavel Madekša  
2016OBJECT: Retail Agency office interior,  
Stockholm, SwedenAREA: 115 m<sup>2</sup>

PROJECT: ENVEN



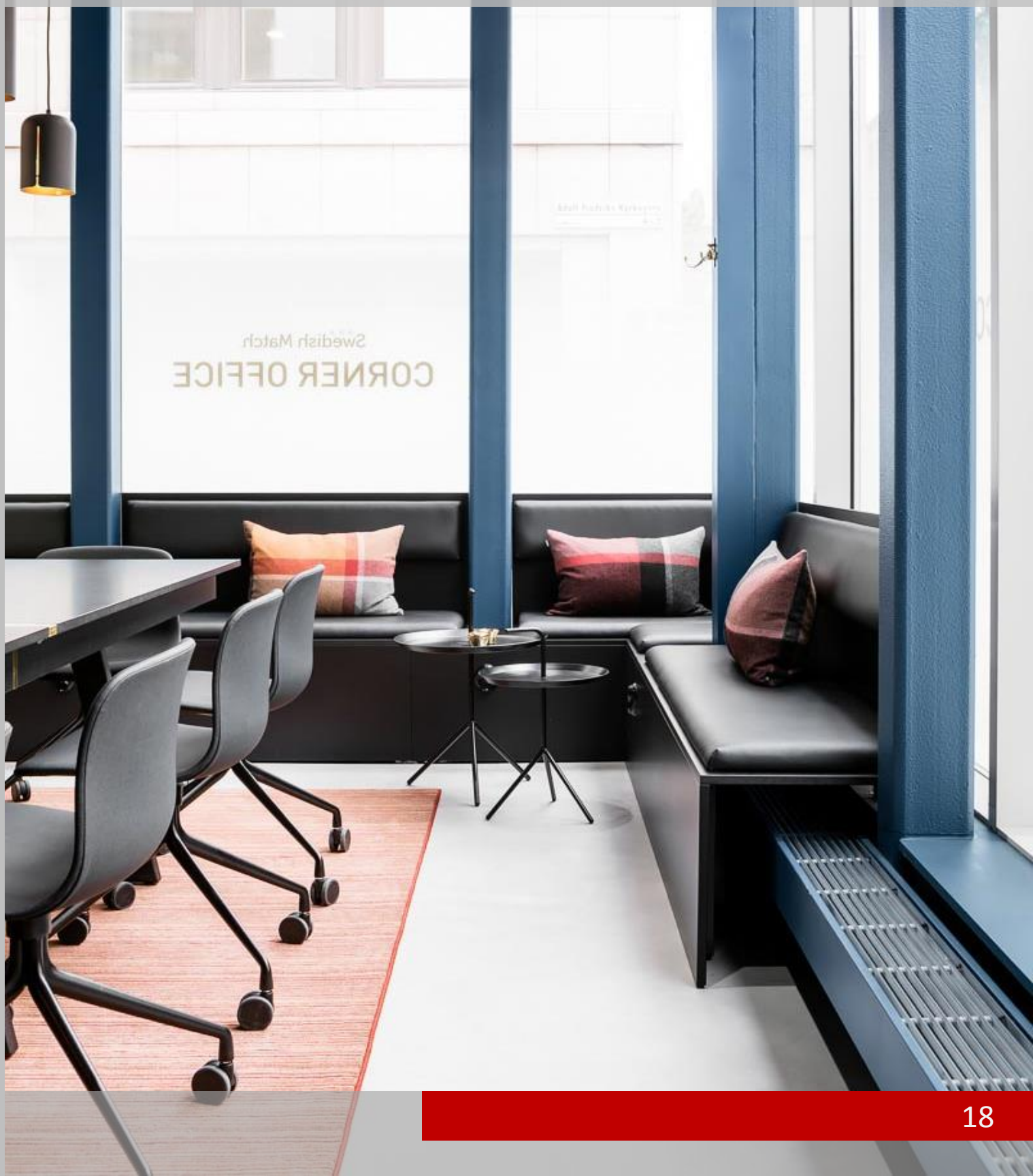
## CORNER OFFICE

PM:  
DATE:Pavel Madekša  
2016

OBJECT: Retail Agency office interior,  
Stockholm, Sweden

AREA: 115 m<sup>2</sup>

PROJECT: ENVEN





OBJECT:

Office interior,  
Poznan, Poland  
4000 m<sup>2</sup>

AREA:

PROJECT:

Metaforma





OBJECT:

Office interior,  
Poznan, Poland  
4000 m<sup>2</sup>

AREA:

PROJECT:

Metaforma





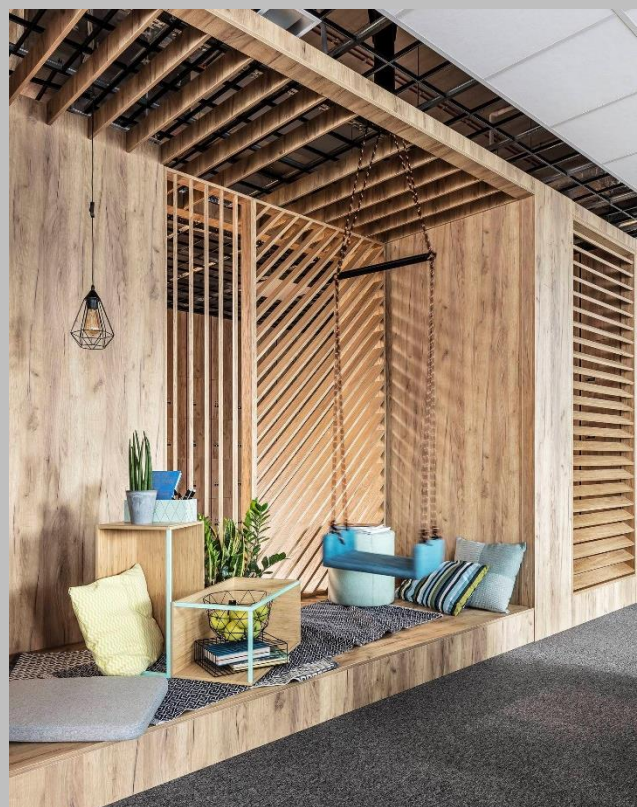
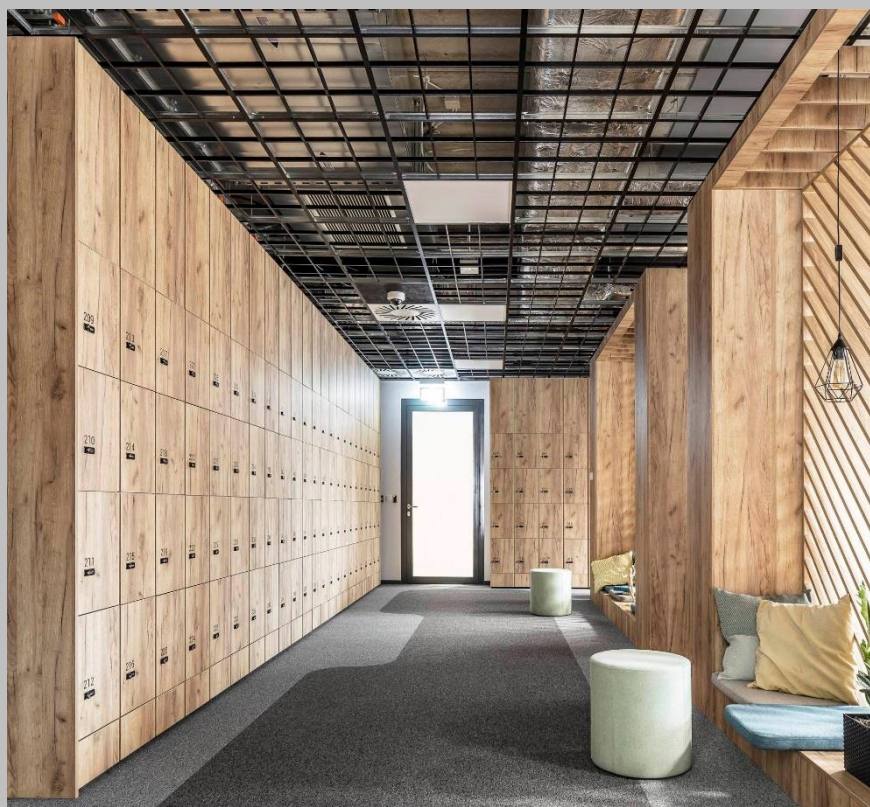
OBJECT:

Office interior,  
Poznan, Poland  
4000 m<sup>2</sup>

AREA:

PROJECT:

Metaforma





OBJECT:

Office interior,  
Poznan, Poland  
4000 m<sup>2</sup>

AREA:

PROJECT:

Metaforma





OBJECT:

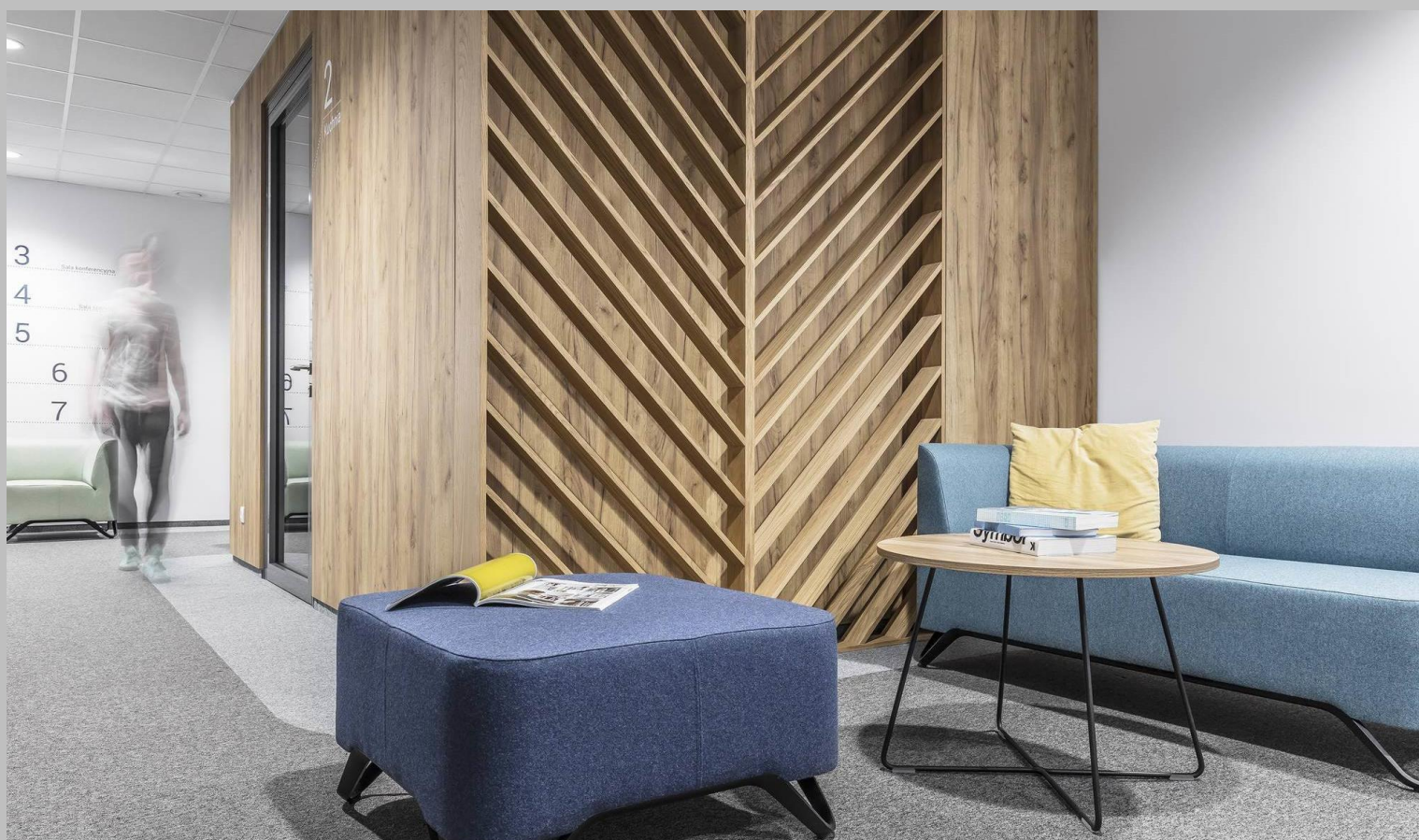
Office interior,  
Poznan, Poland

AREA:

4000 m<sup>2</sup>

PROJECT:

Metaforma





# ALLEGRO GROUP OFFICE

PM:  
DATE:

Pavel Madekša  
2014

OBJECT: Office interior,  
Poznan, Poland

AREA: 11 800 m<sup>2</sup>

PROJECT: ULTRA Architects





# ALLEGRO GROUP OFFICE

PM:  
DATE:

Pavel Madekša  
2014

OBJECT: Office interior,  
Poznan, Poland

AREA: 11 800 m<sup>2</sup>

PROJECT: ULTRA Architects



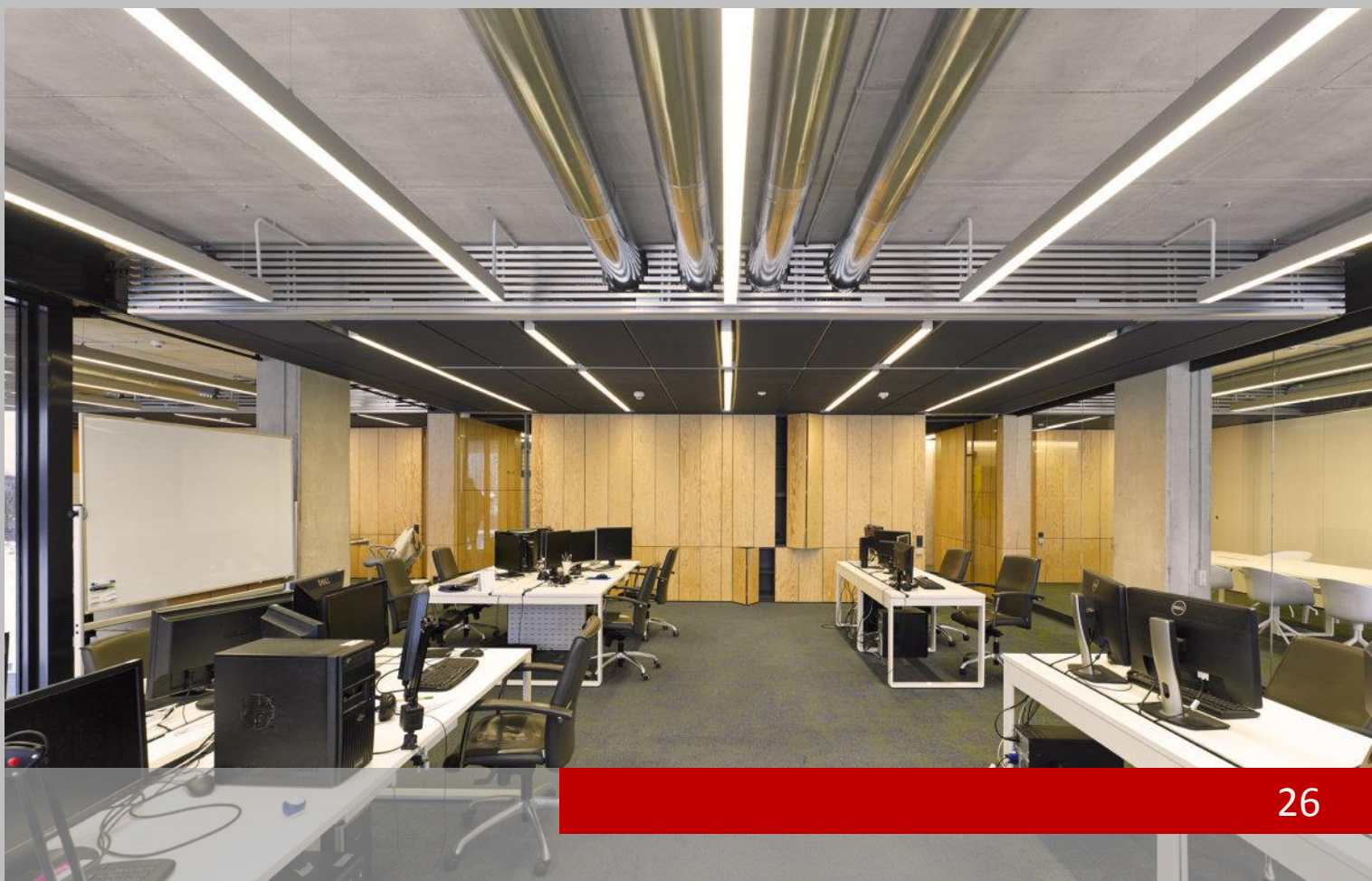


# ALLEGRO GROUP OFFICE

PM:  
DATE:

Pavel Madekša  
2014

OBJECT: Office interior,  
Poznan, Poland  
AREA: 11 800 m<sup>2</sup>  
PROJECT: ULTRA Architects





# ALLEGRO GROUP OFFICE

PM:  
DATE:

Pavel Madekša  
2014

OBJECT: Office interior,  
Poznan, Poland  
AREA: 11 800 m<sup>2</sup>  
PROJECT: ULTRA Architects



# 02

## PROJECTS

### RESIDENTIAL

FLAT IN VILNIUS 1

FLAT IN VILNIUS 2

FLAT IN VILNIUS 3

ŽVĖRYNO BUTAS

FLAT PETROSVKOJ NAB

BACHELOR APARTMENT

ŽVĖRYNO NAMAI R2B



# FLAT IN VILNIUS 1

PM:  
DATE:

Pavel Madekša  
2016

OBJECT: "Naujamiesčio namai" flat interior,  
Vilnius, Lithuania

AREA: 45 m<sup>2</sup>

PROJECT: Petras Sakalauskas



# FLAT IN VILNIUS 1

PM:  
DATE:

Pavel Madekša  
2016

OBJECT: "Naujamiesčio namai" flat interior,  
Vilnius, Lithuania

AREA: 45 m<sup>2</sup>

PROJECT: Petras Sakalauskas





# FLAT IN VILNIUS 1

PM:  
DATE:

Pavel Madekša  
2016

OBJECT: "Naujamiesčio namai" flat interior,  
Vilnius, Lithuania

AREA: 45 m<sup>2</sup>

PROJECT: Petras Sakalauskas



## FLAT IN VILNIUS 2

PM:  
DATE:Pavel Madekša  
2017OBJECT: "Naujamiesčio namai" flat interior,  
Vilnius, LithuaniaAREA: 63 m<sup>2</sup>

PROJECT: Petras Sakalauskas





# FLAT IN VILNIUS 3

PM:  
DATE:

Pavel Madekša  
2017

OBJECT: "Naujamiesčio namai" flat interior,  
Vilnius, Lithuania

AREA: 63 m<sup>2</sup>

PROJECT: Petras Sakalauskas, Jurgita Mockaitytė





# FLAT IN VILNIUS 3

PM:  
DATE:

Pavel Madekša  
2017

OBJECT: "Naujamiesčio namai" flat interior,  
Vilnius, Lithuania  
AREA: 63 m<sup>2</sup>  
PROJECT: Petras Sakalauskas, Jurgita Mockaitytė





# FLAT IN VILNIUS 3

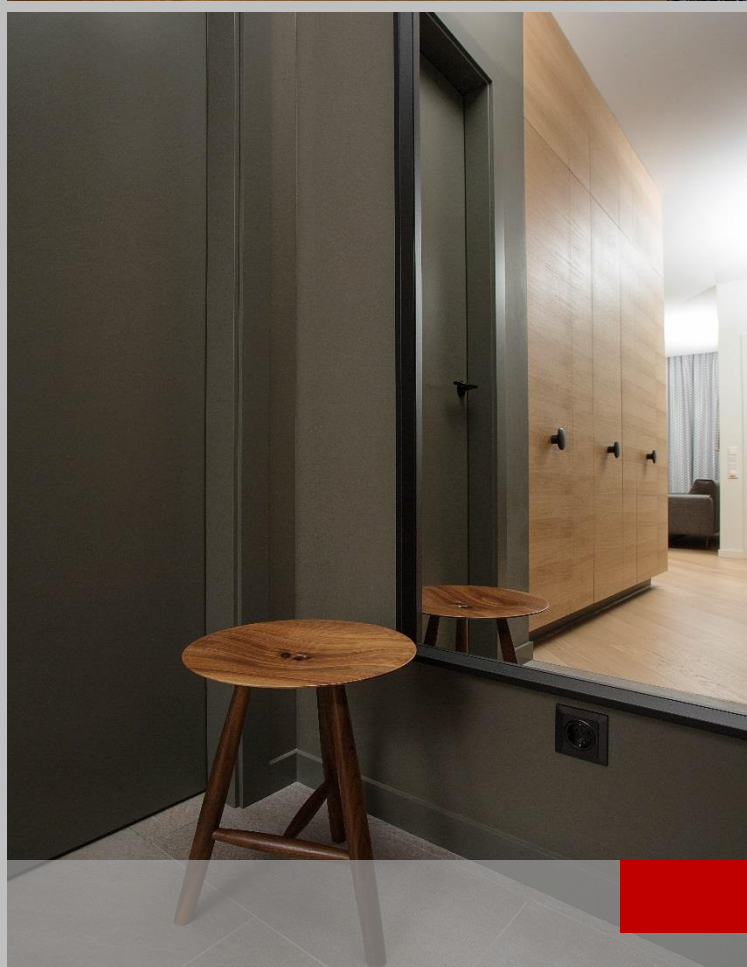
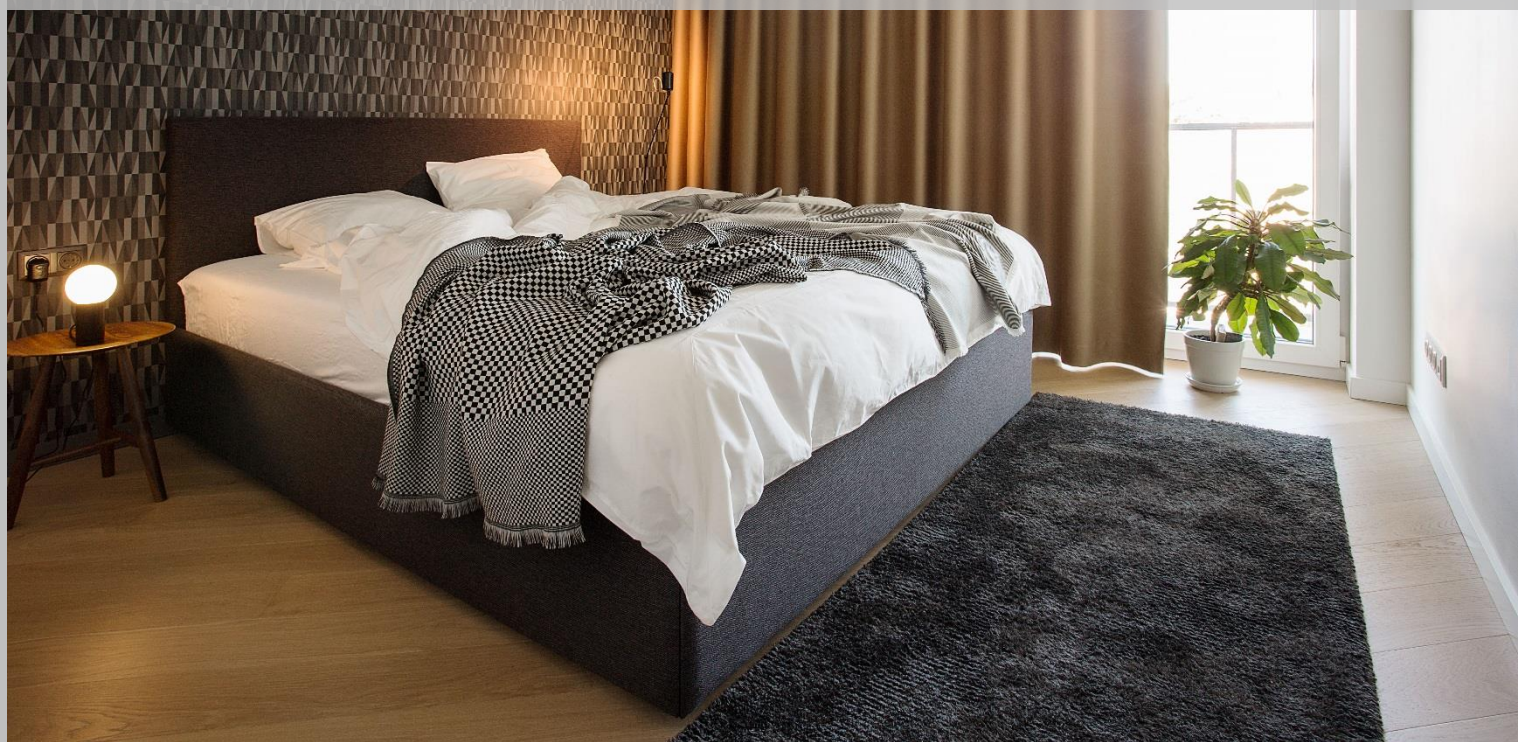
PM:  
DATE:

Pavel Madekša  
2017

OBJECT: "Naujamiesčio namai" flat interior,  
Vilnius, Lithuania

AREA: 63 m<sup>2</sup>

PROJECT: Petras Sakalauskas, Jurgita Mockaitytė





# ŽVĖRYNO BUTAS

PM:  
DATE:

Pavel Madekša  
2016

OBJECT: "Naujamiesčio namai" flat interior,  
Vilnius, Lithuania

AREA: 60 m<sup>2</sup>

PROJECT: Petras Sakalauskas





# ŽVĖRYNO BUTAS

PM:  
DATE:

Pavel Madekša  
2016

OBJECT: "Naujamiesčio namai" flat interior,  
Vilnius, Lithuania  
AREA: 60 m<sup>2</sup>  
PROJECT: Petras Sakalauskas





# ŽVĖRYNO BUTAS

PM:  
DATE:

Pavel Madekša  
2016

OBJECT:

“Naujamiesčio namai“ flat interior,  
Vilnius, Lithuania

AREA:

60 m<sup>2</sup>

PROJECT:

Petras Sakalauskas





# FLAT PETROSVKOJ NAB

PM:  
DATE:

Pavel Madekša  
2015

OBJECT: Flat interior,  
St. Petersburg, Russia  
AREA: 76 m<sup>2</sup>  
PROJECT: Zhilins





# FLAT PETROSVKOJ NAB

PM:  
DATE:

Pavel Madekša  
2015

OBJECT:

Flat interior,  
St. Petersburg, Russia

AREA:

76 m<sup>2</sup>

PROJECT:

Zhilins





# FLAT PETROSVKOJ NAB

PM:  
DATE:

Pavel Madekša  
2015

OBJECT:

Flat interior,  
St. Petersburg, Russia  
76 m<sup>2</sup>

AREA:

PROJECT:

Zhilins





# BACHELOR APARTMENT

PM:  
DATE:

Pavel Madekša  
2016

OBJECT:

Flat interior,  
Poznan, Poland  
80 m<sup>2</sup>

AREA:

PROJECT:

Metaforma





# BACHELOR APARTMENT

PM:  
DATE:

Pavel Madekša  
2016

OBJECT:

Flat interior,  
Poznan, Poland  
80 m<sup>2</sup>

AREA:

PROJECT:

Metaforma





# BACHELOR APARTMENT

PM:  
DATE:

Pavel Madekša  
2016

OBJECT:

Flat interior,  
Poznan, Poland  
80 m<sup>2</sup>

AREA:

PROJECT:

Metaforma





# ŽVĖRYNO NAMAI R2B

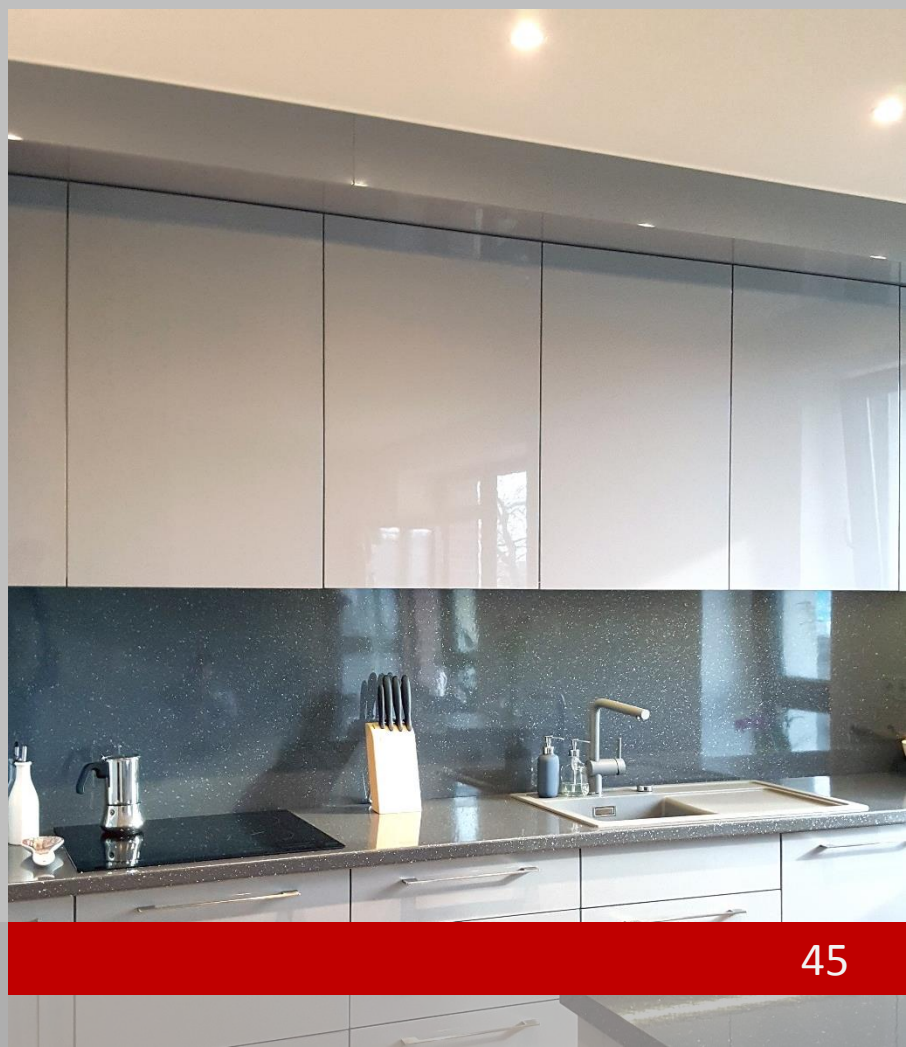
PM:  
DATE:

Pavel Madekša  
2016

OBJECT: Žvėryno namai, AB HANNER  
Vilnius, Lithuania

AREA: 54 m<sup>2</sup>

PROJECT: AB HANNER / ENVEN





# ŽVĖRYNO NAMAI R2B

PM:  
DATE:

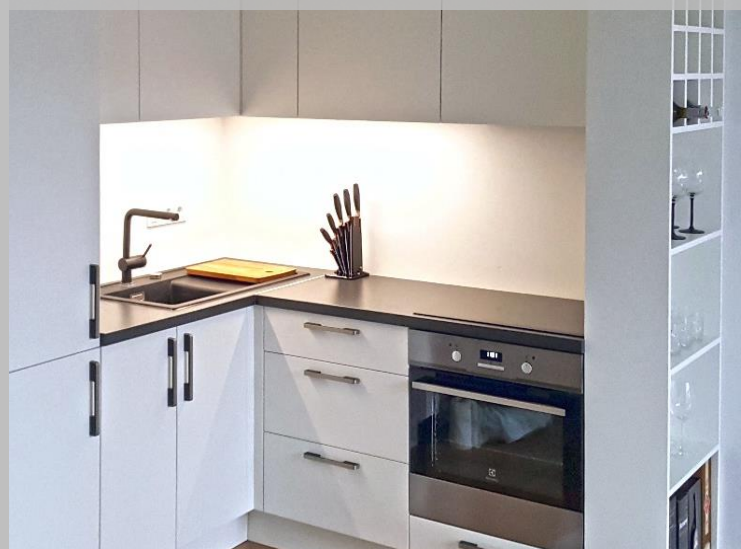
Pavel Madekša  
2016

OBJECT: Žvėryno namai, AB HANNER

Vilnius, Lithuania

AREA: 54 m<sup>2</sup>

PROJECT: AB HANNER / ENVEN





02

PROJECTS

HORECA

SODŲ APARTAMENTAI

CHEVAL

LEVY



## SODŲ APARTAMENTAI

PM:  
DATE:Pavel Madekša  
2016

OBJECT:

Loft interiors,  
Vilnius, Lithuania  
280 m<sup>2</sup>

AREA:

PROJECT:

Asta Kazlauskienė





# SODŲ APARTAMENTAI

PM:  
DATE:

Pavel Madekša  
2016

OBJECT:

Loft interiors,  
Vilnius, Lithuania  
280 m<sup>2</sup>

AREA:

PROJECT:

Asta Kazlauskienė





## SODŲ APARTAMENTAI

PM:  
DATE:Pavel Madekša  
2016

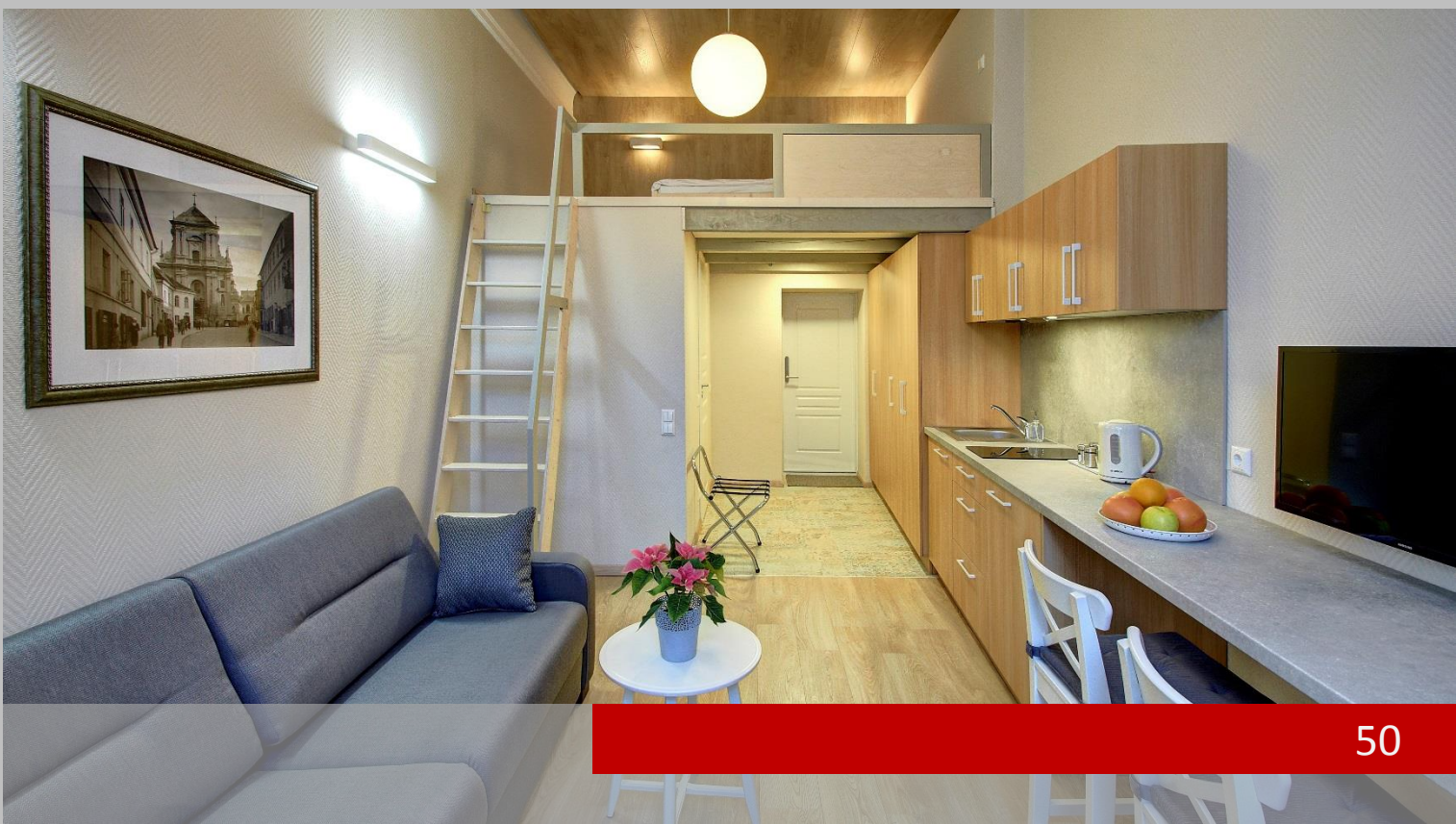
OBJECT:

Loft interiors,  
Vilnius, Lithuania  
280 m<sup>2</sup>

AREA:

PROJECT:

Asta Kazlauskienė





OBJECT: Bar / Cafe interior  
Thessaloniki, Greece

AREA: 1100 m<sup>2</sup>

PROJECT: Ark4LAB





OBJECT: Bar / Cafe interior  
Thessaloniki, Greece

AREA: 1100 m<sup>2</sup>

PROJECT: Ark4LAB





OBJECT:

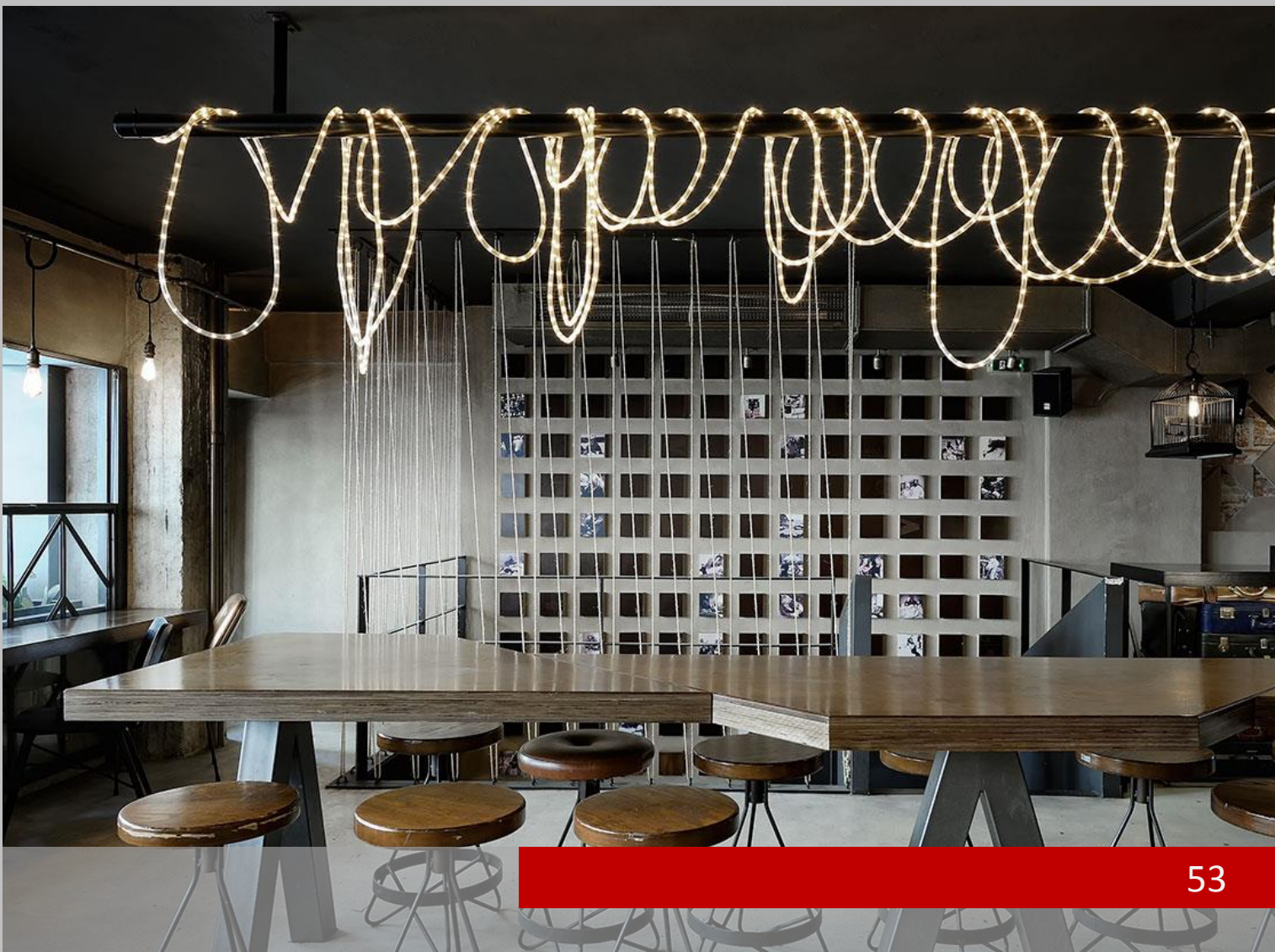
Bar / Cafe interior  
Thessaloniki, Greece

AREA:

1100 m<sup>2</sup>

PROJECT:

Ark4LAB





OBJECT:

Bar / Cafe interior  
Thessaloniki, Greece

AREA:

1100 m<sup>2</sup>

PROJECT:

Ark4LAB





OBJECT: Restaurant interior  
Coventry, United Kingdom

AREA: 4530 m<sup>2</sup>

PROJECT: SHH Architects





OBJECT:

Restaurant interior  
Coventry, United Kingdom

AREA:

4530 m<sup>2</sup>

PROJECT:

SHH Architects





OBJECT: Restaurant interior  
Coventry, United Kingdom

AREA: 4530 m<sup>2</sup>

PROJECT: SHH Architects





OBJECT: Restaurant interior  
Coventry, United Kingdom  
AREA: 4530 m<sup>2</sup>  
PROJECT: SHH Architects





02

PROJECTS

PUBLIC

ST JAMES MARKET



## ST JAMES MARKET

PM:  
DATE:Pavel Madekša  
2016

OBJECT: Store Interior,  
London, United Kingdom

AREA: 800 m<sup>2</sup>

PROJECT: Dalziel & Pow





## ST JAMES MARKET

PM:  
DATE:Pavel Madekša  
2016

OBJECT:

Store Interior,  
London, United Kingdom  
800 m<sup>2</sup>

AREA:

PROJECT:

Dalziel &amp; Pow

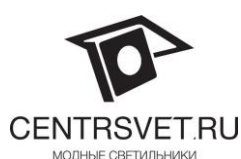




# 03

## CONTACTS

### SUPPLIERS

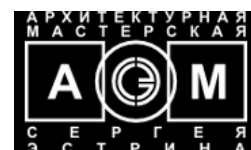
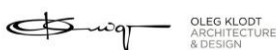




# 03

## CONTACTS

### PARTNERS





# 03

## CONTACTS

# CUSTOMERS





# 03

## CONTACTS

# CONTACTS

## READY TO WORK

IF YOU HAVE A PROJECT OR VISION, JUST CONTACT WITH US AND WE  
WILL HELP YOU TO BUILD YOUR DREAM

**VILNIUS**, Lithuania

info@enven.lt  
+370 604 218 51

[www.enven.lt](http://www.enven.lt)