

CONTRACT FURNITURE
DESIGN
MANUFACTURE
PROJECT MANAGEMENT



ENVEN

INTERIOR FIT-OUT PROFESSIONALS



01

CONTENT

ABOUT COMPANY

ABOUT US	3
MANAGING INDIVIDUAL PROJECTS	5
WE CAN MAKE ...	6
WHY US?	7
TECHNOLOGY	8
COMPETENCE	9
YOU CAN BE OUR PARTNER / CUSTPMER ...	10
OFFISE	11
RESIDENTIAL	28
HORECA	47
PUBLIC	59
SUPPLIERS	62
PARTNERS	63
CUSTOMERS	64
CONTACTS	65

PROJECTS

CONTACTS

01

ABOUT US

ENVEN IS INTERIOR FIT-OUT AND FURNISHING COMPANY, founded in 2014 by Lithuanian designers, architects and professional manufacturers.

Whether creating a fashion store, an office, a bar or a restaurant, **ENVEN** aims to provide high-quality solutions to client's design needs, innovating new production techniques and construction methods. We offer high quality, complex project management solutions in **construction and furniture manufacturing**.

We work in private, commercial and retail market, mainly for fashion brands, retailers and hospitality units (restaurants, bars, hotels) all across Europe.

01

ABOUT US



In the former years we have completed projects in the following countries: **Netherlands, France, Denmark, Norway, Sweden, United Kingdom, Germany, Russia, Poland, Baltic states.**

01

ABOUT US

MANAGING OF INDIVIDUAL PROJECTS

- Communication with architects, customers
- Coordination of the project
- Preparation of project estimate
- Development of drafts/projections
- Visualisation of the products
- Electrical installation
- Quality control
- Delivery of production
- Production assembling into place

WE CAN OFFER PRODUCTS MADE OF

- Natural stone
- ABS
- High pressure laminate
- Melamine faced chipboard
- Metal
- Solid wood
- Textiles
- Natural leather
- Glass
- Furniture linoleum
- Painted MDF
- Veneer

01

ABOUT US

WHY US?

FLEXIBILITY We own a 2000 sqm furniture factory in Lithuania. Furthermore, we collaborate with a number of production companies, therefore we can implement even the most complex projects. We offer a wide range of services from decoration works to sophisticated and unique furniture.

QUALITY We supervise all processes throughout designing, production and assembling.

INTERMEDIATION We intermediate between businesses in export market as well. We ensure a constant, high quality individual standard production supply for the foreign or local clients.

01

ABOUT US

TECHNOLOGY

ENVEN offers an exceptional contract process “Direct Design Build”. By using this method, the object can be prepared for costumers operation by saving at least 20% of customer’s financial and time resources.

The main technologies are the simultaneous implementation of all major interior design works: design, finishing works, production of non-standard furniture, supplies of other furniture and household appliances, plumbing and electrical works.

All complex interior works in on Contract with a fixed price. This process, which is justified by the systemicity and functionality, has already been appreciated by many customer from different regions.

PROCESS

RESULT

DIRECT

project
estimate
guaranties

DESIGN

architecture
design
project

delivery
coordination
manufacture

BUILD

100%

Realized object

20%

less resources
faster flow

01

ABOUT US

COMPETENCE

The key of successful work is clear project management. Both product and process management qualities are main guarantee of successful result.

1

CONTRACT
AND
RESPONSIBLE
PERSON

10⁺

COMPETENCES
OF
NON-STANDARD
FURNISING

20[%]

SAVINGS OF
FINANCIAL AND
TIME
RESOURCES

50⁺

SUCCESSFULLY
REALISED
PROJECTS

01

ABOUT US

**YOU CAN BE OUR PARTNER
IF YOU ARE**

ARCHITECT / DESIGNER

WE CAN HELP YOU TO IMPLEMENT YOUR PROJECT FOR DIRECT CLIENT.

REAL ESTATE DEVELOPER

WE CAN BE YOUR PARTNER OF FURNISHING

**YOU CAN BE OUR CLIENT
IF YOU ARE**

PRIVATE CUSTOMER

WE CAN REALIZE YOUR DREAM HOUSE OR APARTMENT

ANY BUSINESS DEVELOPER

WE CAN REALIZE AND FURNISH YOUR NEW OFFICE, SHOP, RESTAURANT,
CAFÉ OR ANY OTHER BUSINESS AREA

02

PROJECTS

OFFICES

DE BANK

CORNER OFFICE

META

ALLEGRO GROUP OFFICE

DE BANK

PM:
DATE:

Pavel Madekša
2015

OBJECT: Bank interior,
Rotterdam, the Netherlands
AREA: 1400 m²
PROJECT: KAAAN Architekten



DE BANK

PM:
DATE:

Pavel Madekša
2015

OBJECT:

Bank interior,
Rotterdam, the Netherlands

AREA:

1400 m²

PROJECT:

KAAN Architekten

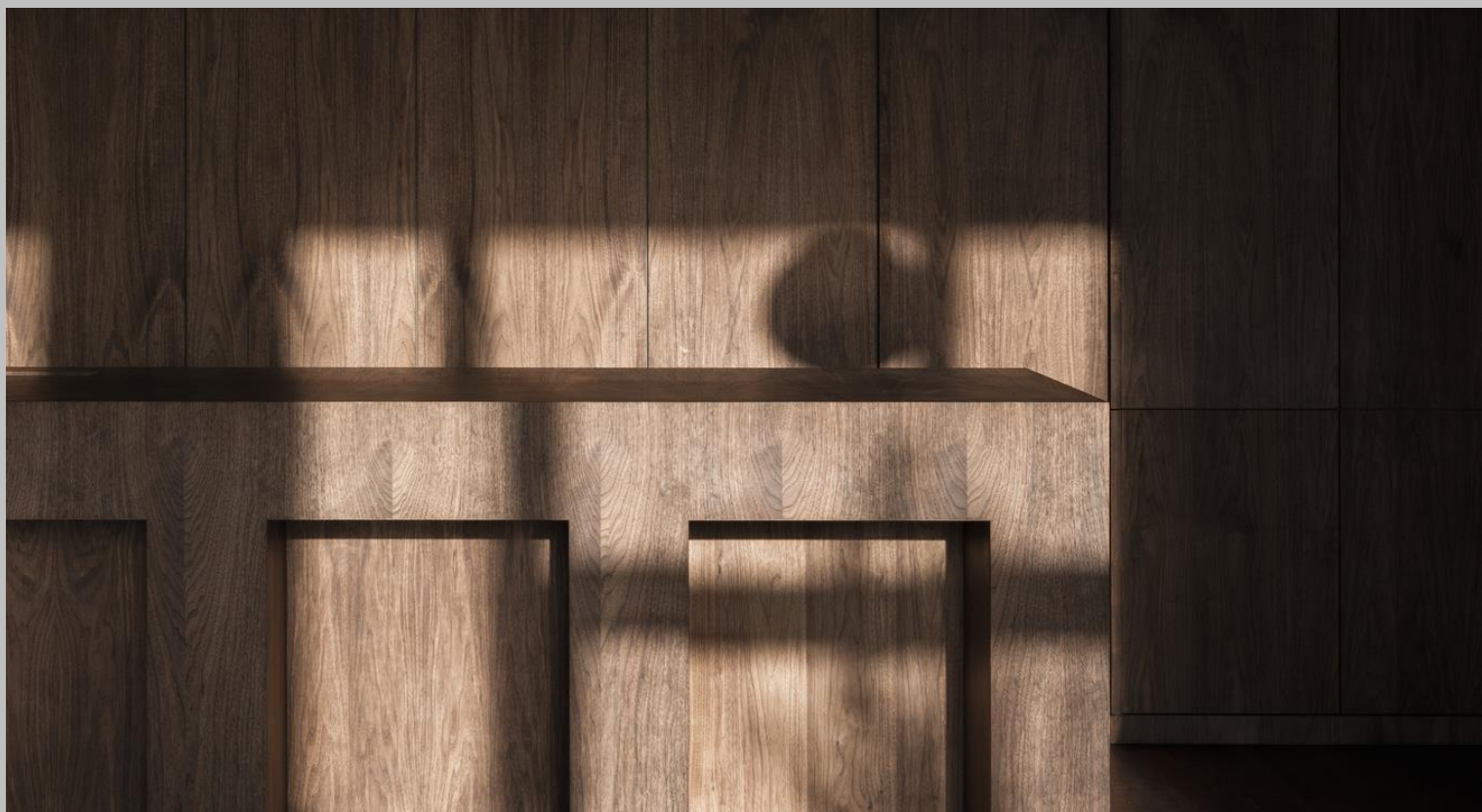


DE BANK

PM:
DATE:

Pavel Madekša
2015

OBJECT: Bank interior,
Rotterdam, the Netherlands
AREA: 1400 m²
PROJECT: KAAAN Architekten



DE BANK

PM:
DATE:

Pavel Madekša
2015

OBJECT: Bank interior,
Rotterdam, the Netherlands

AREA: 1400 m²

PROJECT: KAAAN Architekten



CORNER OFFICE

PM:
DATE:Pavel Madekša
2016

OBJECT:

Retail Agency office interior,
Stockholm, Sweden

AREA:

115 m²

PROJECT:

ENVEN



CORNER OFFICE

PM:
DATE:Pavel Madekša
2016OBJECT: Retail Agency office interior,
Stockholm, SwedenAREA: 115 m²

PROJECT: ENVEN



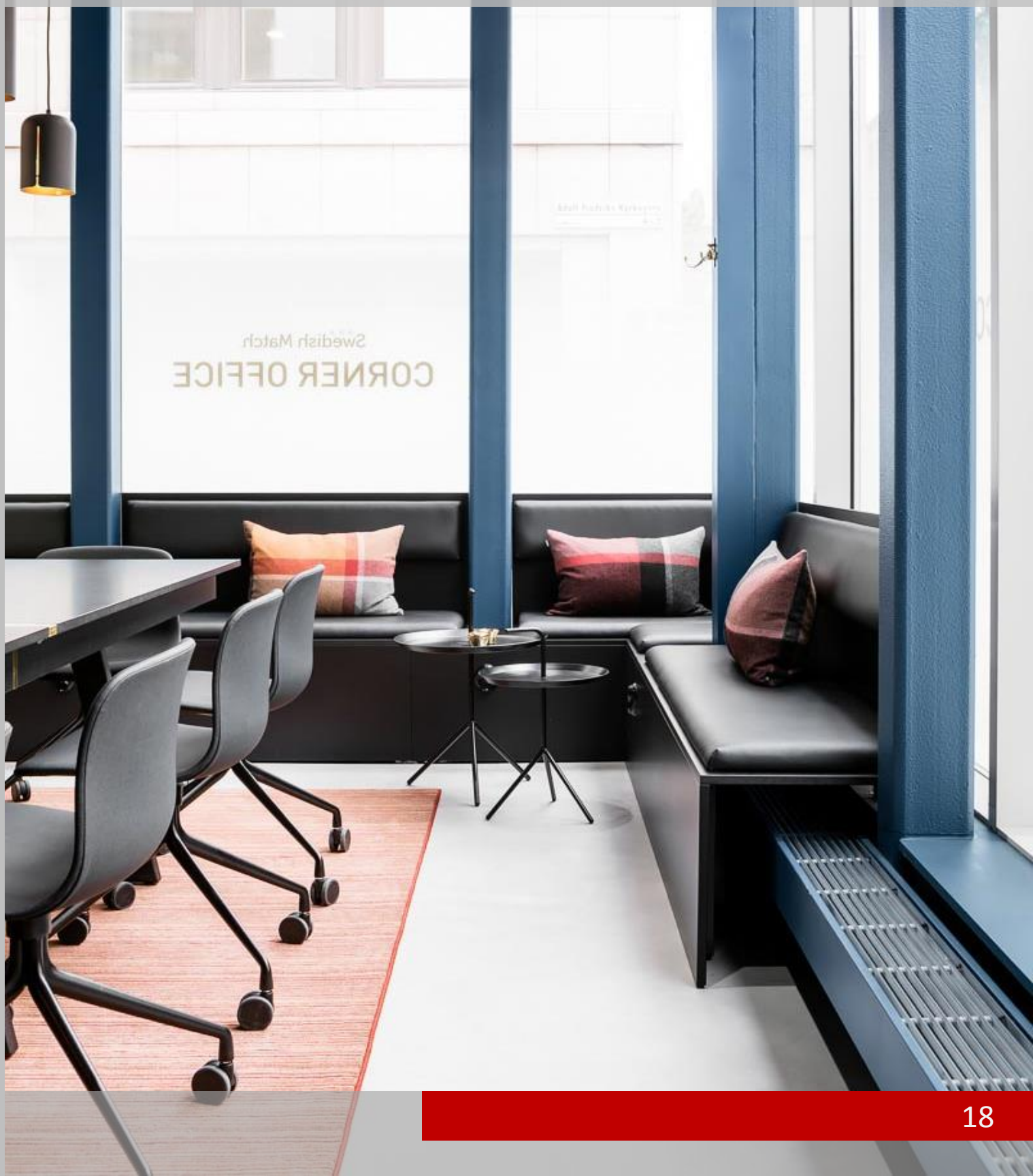
CORNER OFFICE

PM:
DATE:Pavel Madekša
2016

OBJECT: Retail Agency office interior,
Stockholm, Sweden

AREA: 115 m²

PROJECT: ENVEN



OBJECT:

Office interior,
Poznan, Poland
4000 m²

AREA:

PROJECT:

Metaforma



OBJECT:

Office interior,
Poznan, Poland
4000 m²

AREA:

PROJECT:

Metaforma



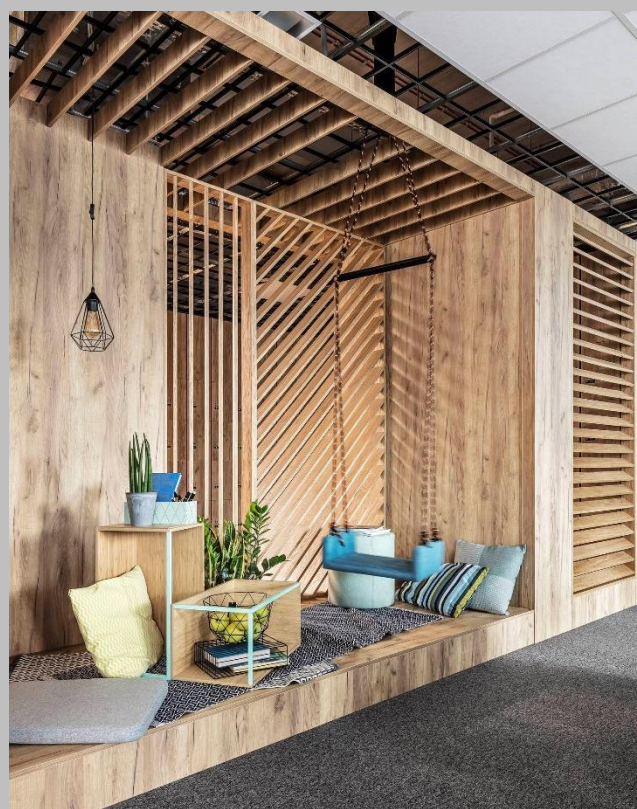
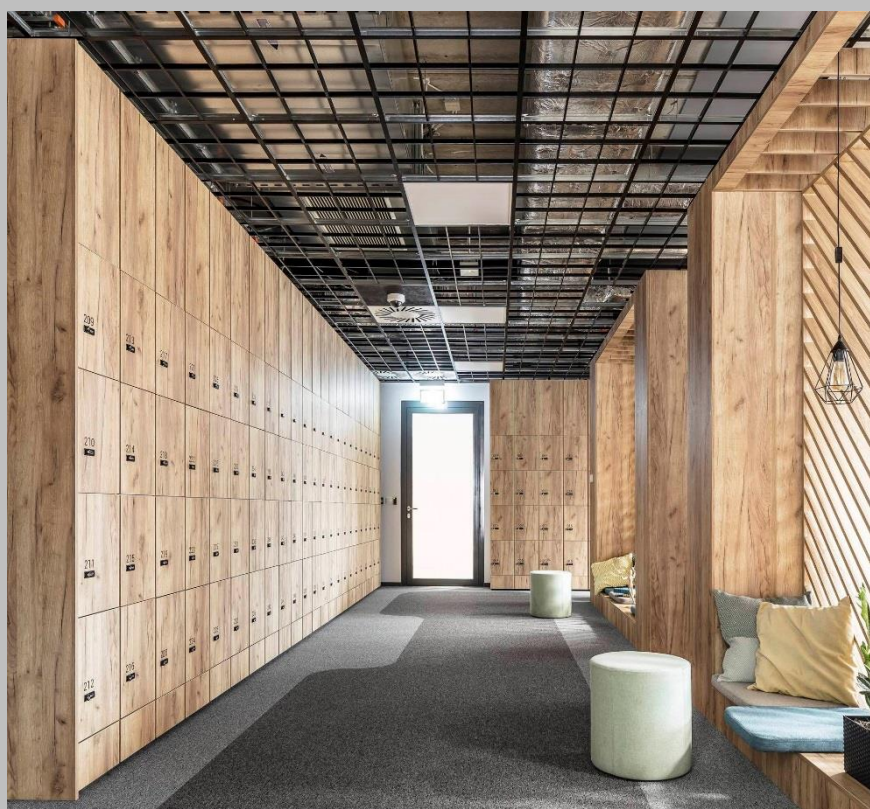
OBJECT:

Office interior,
Poznan, Poland
4000 m²

AREA:

PROJECT:

Metaforma



OBJECT:

Office interior,
Poznan, Poland
4000 m²

AREA:

PROJECT:

Metaforma



OBJECT:

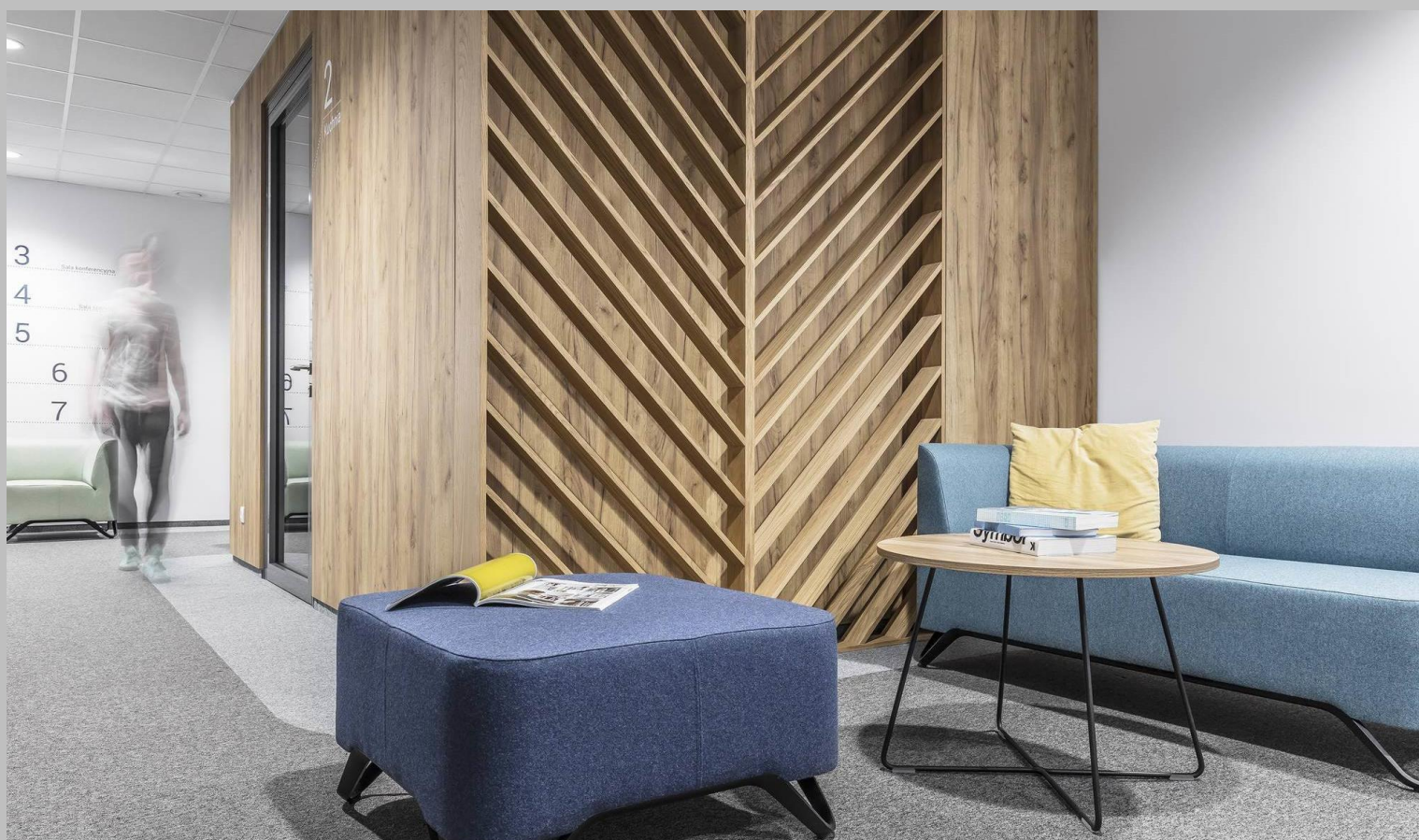
Office interior,
Poznan, Poland

AREA:

4000 m²

PROJECT:

Metaforma



ALLEGRO GROUP OFFICE

PM:
DATE:

Pavel Madekša
2014

OBJECT: Office interior,
Poznan, Poland

AREA: 11 800 m²

PROJECT: ULTRA Architects



ALLEGRO GROUP OFFICE

PM:
DATE:

Pavel Madekša
2014

OBJECT: Office interior,
Poznan, Poland

AREA: 11 800 m²

PROJECT: ULTRA Architects

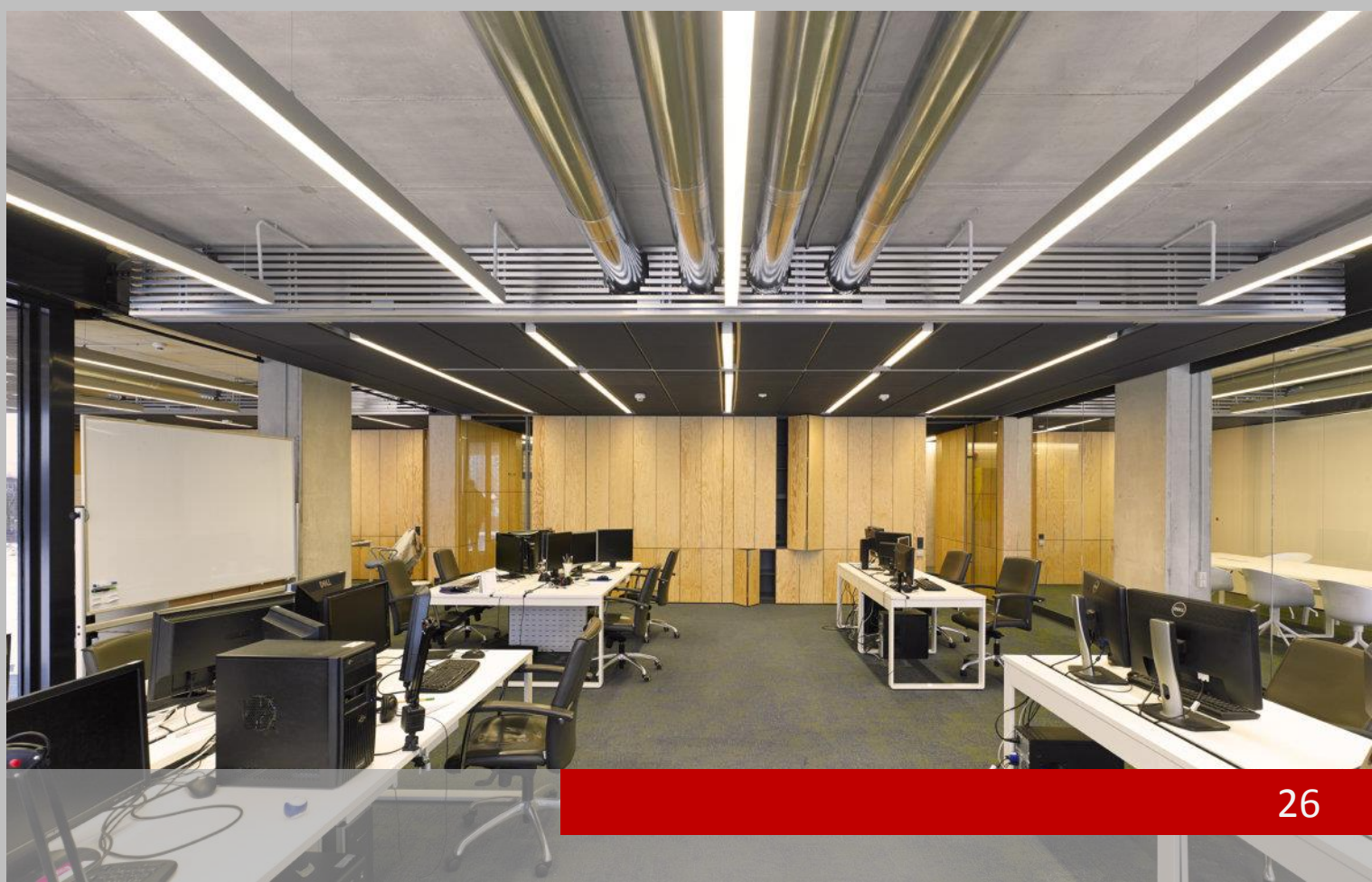


ALLEGRO GROUP OFFICE

PM:
DATE:

Pavel Madekša
2014

OBJECT: Office interior,
Poznan, Poland
AREA: 11 800 m²
PROJECT: ULTRA Architects



ALLEGRO GROUP OFFICE

PM:
DATE:

Pavel Madekša
2014

OBJECT: Office interior,
Poznan, Poland

AREA: 11 800 m²

PROJECT: ULTRA Architects



02

PROJECTS

RESIDENTIAL

FLAT IN VILNIUS 1

FLAT IN VILNIUS 2

FLAT IN VILNIUS 3

ŽVĖRYNO BUTAS

FLAT PETROSVKOJ NAB

BACHELOR APARTMENT

ŽVĖRYNO NAMAI R2B

FLAT IN VILNIUS 1

PM:
DATE:

Pavel Madekša
2016

OBJECT: "Naujamiesčio namai" flat interior,
Vilnius, Lithuania

AREA: 45 m²

PROJECT: Petras Sakalauskas



FLAT IN VILNIUS 1

PM:
DATE:

Pavel Madekša
2016

OBJECT: "Naujamiesčio namai" flat interior,
Vilnius, Lithuania

AREA: 45 m²

PROJECT: Petras Sakalauskas



FLAT IN VILNIUS 1

PM:
DATE:

Pavel Madekša
2016

OBJECT: "Naujamiesčio namai" flat interior,
Vilnius, Lithuania
AREA: 45 m²
PROJECT: Petras Sakalauskas



FLAT IN VILNIUS 2

PM:
DATE:

Pavel Madekša
2017

OBJECT: "Naujamiesčio namai" flat interior,
Vilnius, Lithuania

AREA: 63 m²

PROJECT: Petras Sakalauskas



FLAT IN VILNIUS 3

PM:
DATE:

Pavel Madekša
2017

OBJECT: "Naujamiesčio namai" flat interior,
Vilnius, Lithuania

AREA: 63 m²

PROJECT: Petras Sakalauskas, Jurgita Mockaitytė



FLAT IN VILNIUS 3

PM:
DATE:

Pavel Madekša
2017

OBJECT: "Naujamiesčio namai" flat interior,
Vilnius, Lithuania
AREA: 63 m²
PROJECT: Petras Sakalauskas, Jurgita Mockaitytė



FLAT IN VILNIUS 3

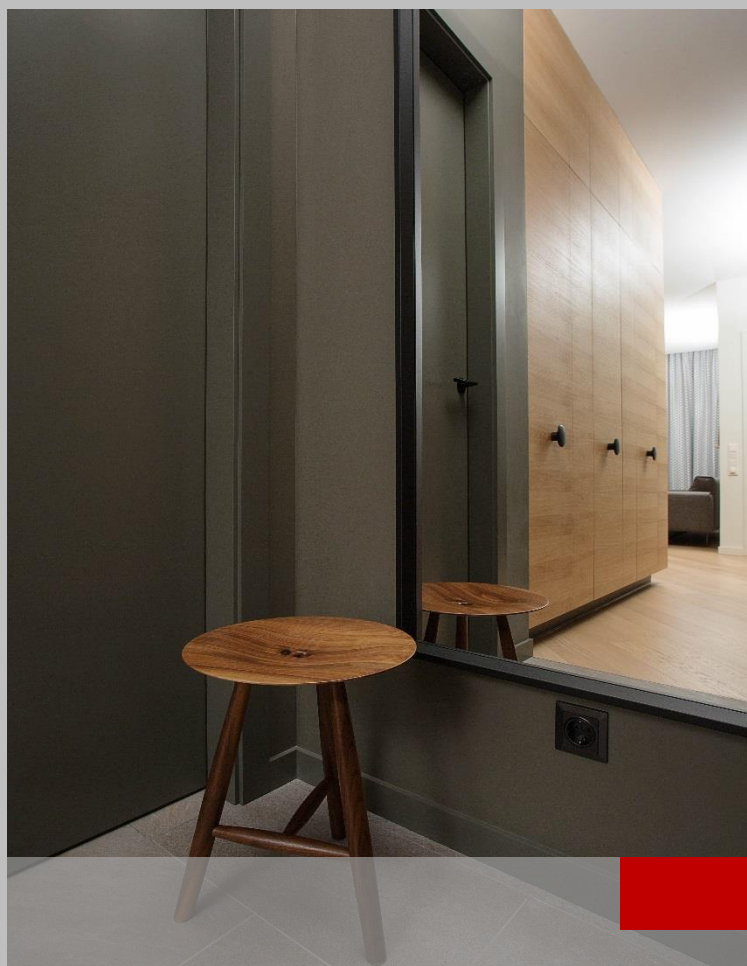
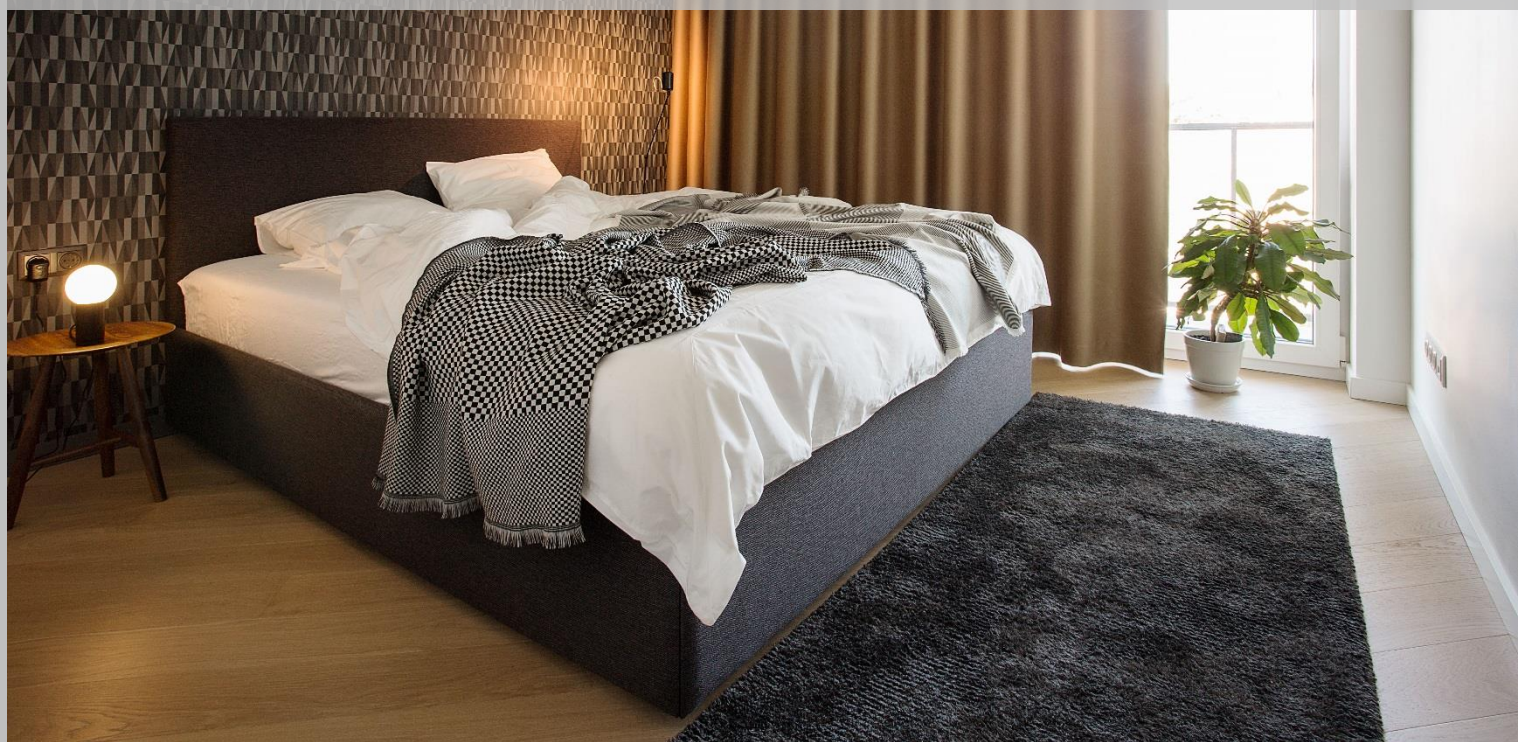
PM:
DATE:

Pavel Madekša
2017

OBJECT: "Naujamiesčio namai" flat interior,
Vilnius, Lithuania

AREA: 63 m²

PROJECT: Petras Sakalauskas, Jurgita Mockaitytė



ŽVĖRYNO BUTAS

PM:
DATE:

Pavel Madekša
2016

OBJECT: "Naujamiesčio namai" flat interior,
Vilnius, Lithuania

AREA: 60 m²

PROJECT: Petras Sakalauskas



ŽVĖRYNO BUTAS

PM:
DATE:

Pavel Madekša
2016

OBJECT: "Naujamiesčio namai" flat interior,
Vilnius, Lithuania
AREA: 60 m²
PROJECT: Petras Sakalauskas



ŽVĖRYNO BUTAS

PM:
DATE:

Pavel Madekša
2016

OBJECT:

"Naujamiesčio namai" flat interior,
Vilnius, Lithuania

AREA:

60 m²

PROJECT:

Petras Sakalauskas



FLAT PETROSVKOJ NAB

PM:
DATE:

Pavel Madekša
2015

OBJECT: Flat interior,
St. Petersburg, Russia
AREA: 76 m²
PROJECT: Zhilins



FLAT PETROSVKOJ NAB

PM:
DATE:

Pavel Madekša
2015

OBJECT:

Flat interior,
St. Petersburg, Russia

AREA:

76 m²

PROJECT:

Zhilins



FLAT PETROSVKOJ NAB

PM:
DATE:

Pavel Madekša
2015

OBJECT:

Flat interior,
St. Petersburg, Russia
76 m²

AREA:

PROJECT:

Zhilins



BACHELOR APARTMENT

PM:
DATE:

Pavel Madekša
2016

OBJECT:

Flat interior,
Poznan, Poland
80 m²

AREA:

PROJECT:

Metaforma



BACHELOR APARTMENT

PM:
DATE:

Pavel Madekša
2016

OBJECT:

Flat interior,
Poznan, Poland
80 m²

AREA:

PROJECT:

Metaforma



BACHELOR APARTMENT

PM:
DATE:

Pavel Madekša
2016

OBJECT:

Flat interior,
Poznan, Poland
80 m²

AREA:

PROJECT:

Metaforma



ŽVĖRYNO NAMAI R2B

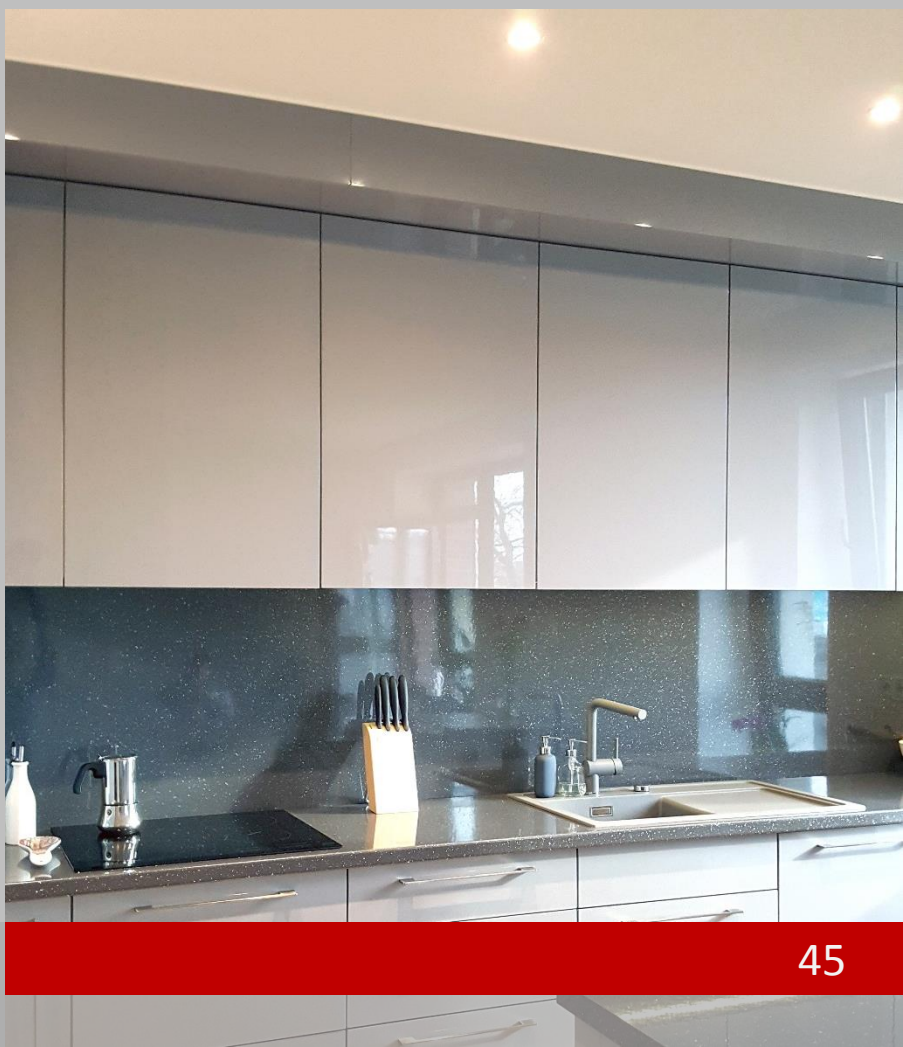
PM:
DATE:

Pavel Madekša
2016

OBJECT: Žvėryno namai, AB HANNER
Vilnius, Lithuania

AREA: 54 m²

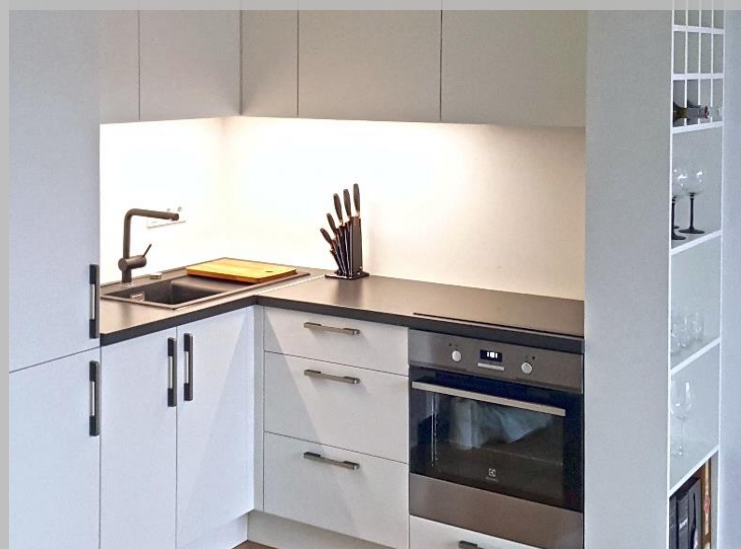
PROJECT: AB HANNER / ENVEN



ŽVĖRYNO NAMAI R2B

PM:
DATE:Pavel Madekša
2016OBJECT: Žvėryno namai, AB HANNER
Vilnius, LithuaniaAREA: 54 m²

PROJECT: AB HANNER / ENVEN



02

PROJECTS

HORECA

SODŲ APARTAMENTAI

CHEVAL

LEVY

SODŲ APARTAMENTAI

PM:
DATE:Pavel Madekša
2016

OBJECT:

Loft interiors,
Vilnius, Lithuania
280 m²

AREA:

PROJECT:

Asta Kazlauskienė



SODŲ APARTAMENTAI

PM:
DATE:

Pavel Madekša
2016

OBJECT:

Loft interiors,
Vilnius, Lithuania
280 m²

AREA:

PROJECT:

Asta Kazlauskienė



SODŲ APARTAMENTAI

PM:
DATE:Pavel Madekša
2016

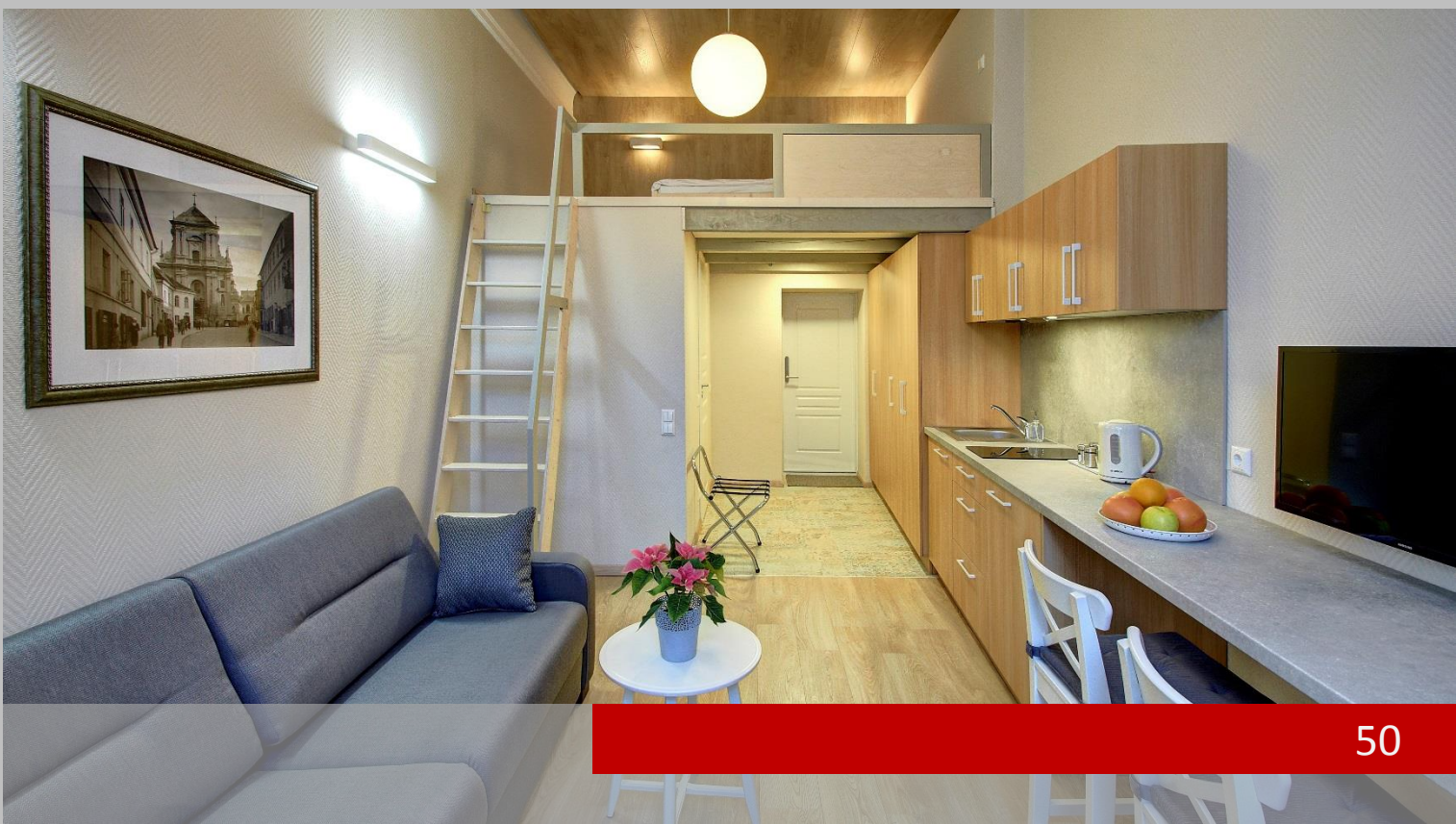
OBJECT:

Loft interiors,
Vilnius, Lithuania
280 m²

AREA:

PROJECT:

Asta Kazlauskienė



OBJECT: Bar / Cafe interior
Thessaloniki, Greece

AREA: 1100 m²

PROJECT: Ark4LAB



OBJECT: Bar / Cafe interior
Thessaloniki, Greece

AREA: 1100 m²

PROJECT: Ark4LAB



OBJECT:

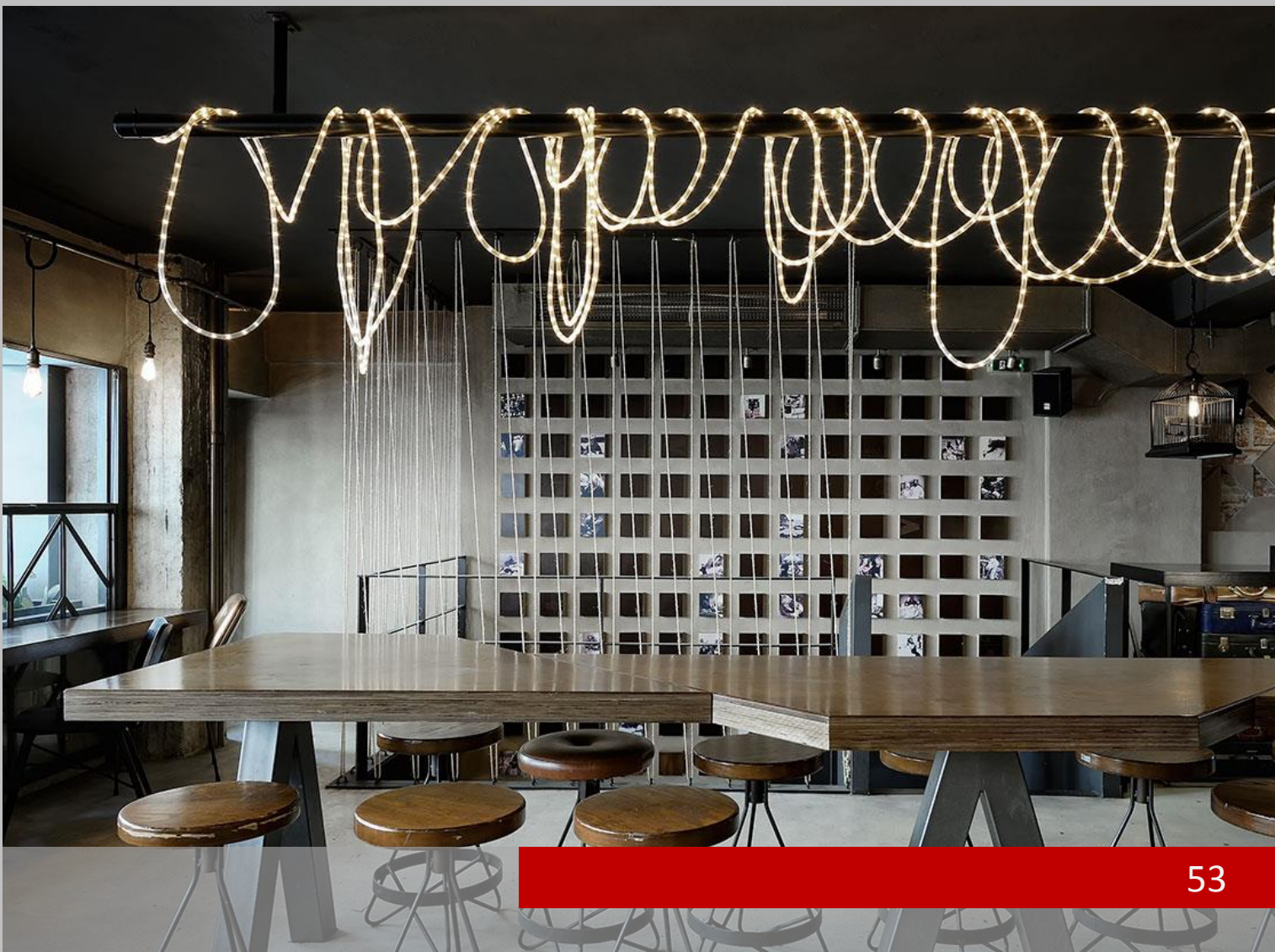
Bar / Cafe interior
Thessaloniki, Greece

AREA:

1100 m²

PROJECT:

Ark4LAB



OBJECT:

Bar / Cafe interior
Thessaloniki, Greece

AREA:

1100 m²

PROJECT:

Ark4LAB



OBJECT: Restaurant interior
Coventry, United Kingdom

AREA: 4530 m²

PROJECT: SHH Architects



OBJECT: Restaurant interior
Coventry, United Kingdom

AREA: 4530 m²

PROJECT: SHH Architects



OBJECT: Restaurant interior
Coventry, United Kingdom

AREA: 4530 m²

PROJECT: SHH Architects



OBJECT: Restaurant interior
Coventry, United Kingdom
AREA: 4530 m²
PROJECT: SHH Architects



02

PROJECTS

PUBLIC

ST JAMES MARKET

ST JAMES MARKET

PM:
DATE:

Pavel Madekša
2016

OBJECT: Store Interior,
London, United Kingdom
AREA: 800 m²
PROJECT: Dalziel & Pow



ST JAMES MARKET

PM:
DATE:Pavel Madekša
2016

OBJECT:

Store Interior,
London, United Kingdom
800 m²

AREA:

PROJECT:

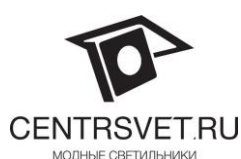
Dalziel & Pow



03

CONTACTS

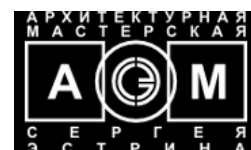
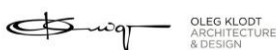
SUPPLIERS



03

CONTACTS

PARTNERS



03

CONTACTS

CUSTOMERS



03

CONTACTS

CONTACTS

READY TO WORK

IF YOU HAVE A PROJECT OR VISION, JUST CONTACT WITH US AND WE
WILL HELP YOU TO BUILD YOUR DREAM

VILNIUS, Lithuania
J.Galvydžio st. 5

vilnius@enven.lt
+370 604 218 51

www.enven.lt